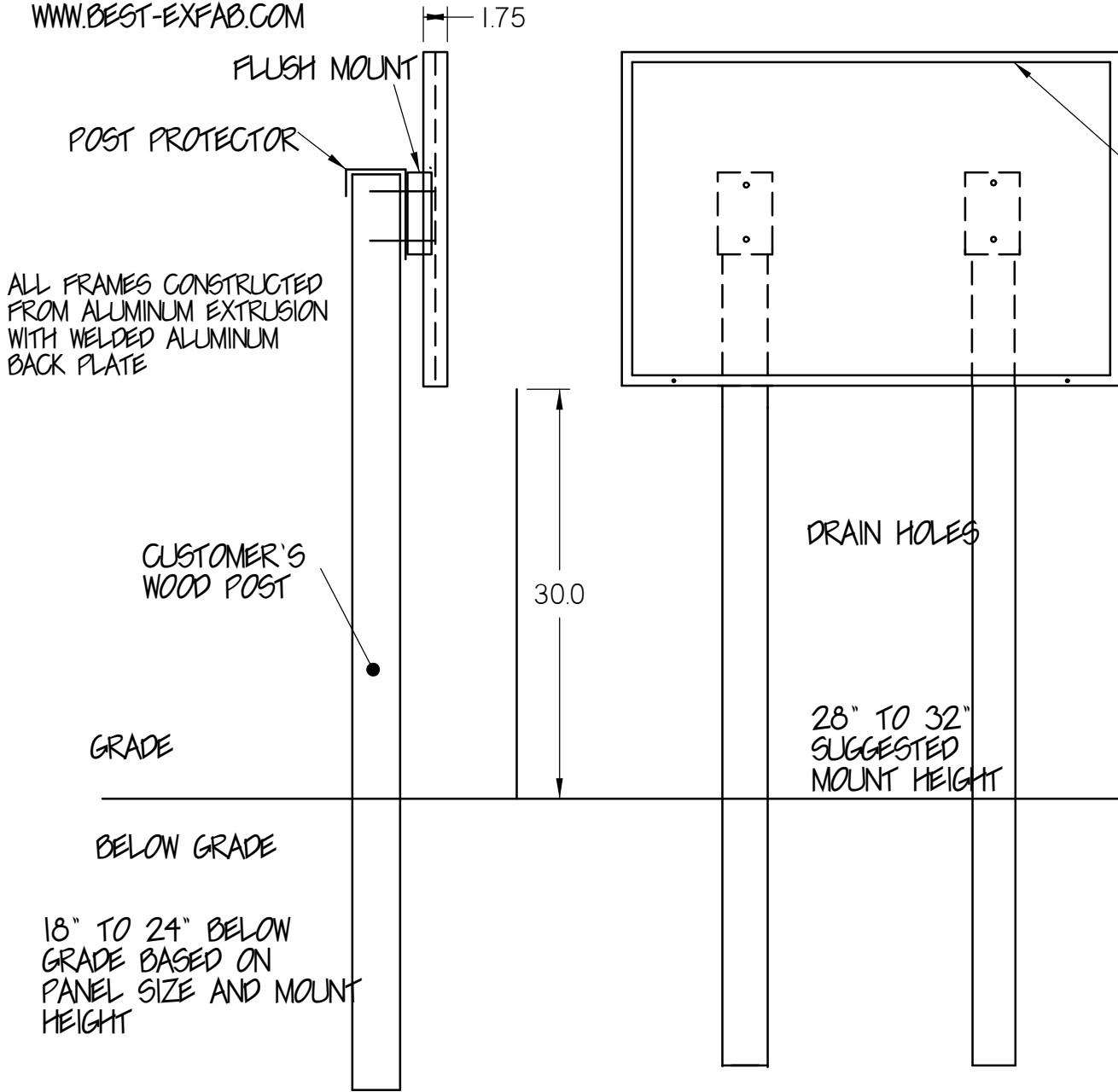


BEST-EXHIBITS
 DIVISION OF DRM DIVERSAFAB
 RUTH@BEST-EXFAB.COM
 WWW.BEST-EXFAB.COM

BEST-EX FLUSH POST MOUNT SIGN FRAME

ATTACHES TO CUSTOMER SUPPLIED WOOD 4"X4" POST



FRAMES UP TO 18" H X 24" W
 REQUIRE (1) POST
 FRAMES LARGER THAN 18" X 24"
 REQUIRE (2) POSTS
 18" X 24" MAY HAVE 1 OR 2 POSTS

REMOVABLE RAIL

ALL FRAMES CONSTRUCTED
 FROM ALUMINUM EXTRUSION
 WITH WELDED ALUMINUM
 BACK PLATE

FRAMES ATTACH TO WOOD POST
 WITH THRU BOLTS - PROVIDED

STANDARD POWDER COAT COLOR
 BLACK TEXTURE

OPTIONAL COLORS:
 NPS BROWN
 NPS GI CHARCOAL (DARK BROWN)
 NPS YORKTOWN GREEN
 RAL COLOR MATCHING
 WET PAINT COATINGS

FRAME EDGE WILL COVER
 5/8" MARGIN ALL EDGES OF
 PANEL

DRAIN HOLES

28" TO 32"
 SUGGESTED
 MOUNT HEIGHT

STANDARD FRAME CONSTRUCTION
 FOR MAX 1/8" THICK PANEL

CUSTOM FRAME CONSTRUCTION
 FOR PANELS UP TO 1/4" THICK

FRAMES SIZED TO FIT GRAPHIC PANEL

GRAPHIC PANEL PRODUCED BY OTHERS

18" TO 24" BELOW
 GRADE BASED ON
 PANEL SIZE AND MOUNT
 HEIGHT